

Domestic Violence Street Survey

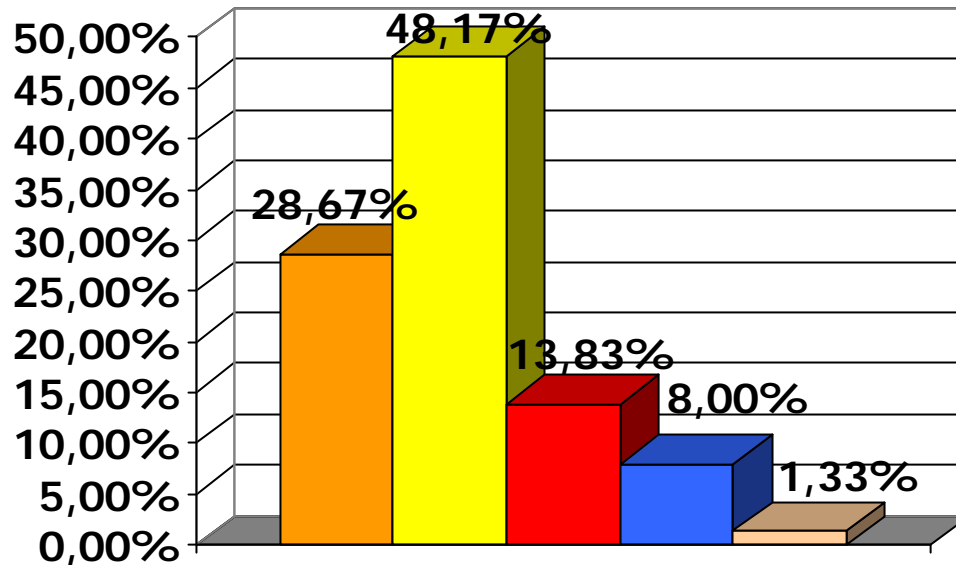
November 2003



Daniel Verman, MD

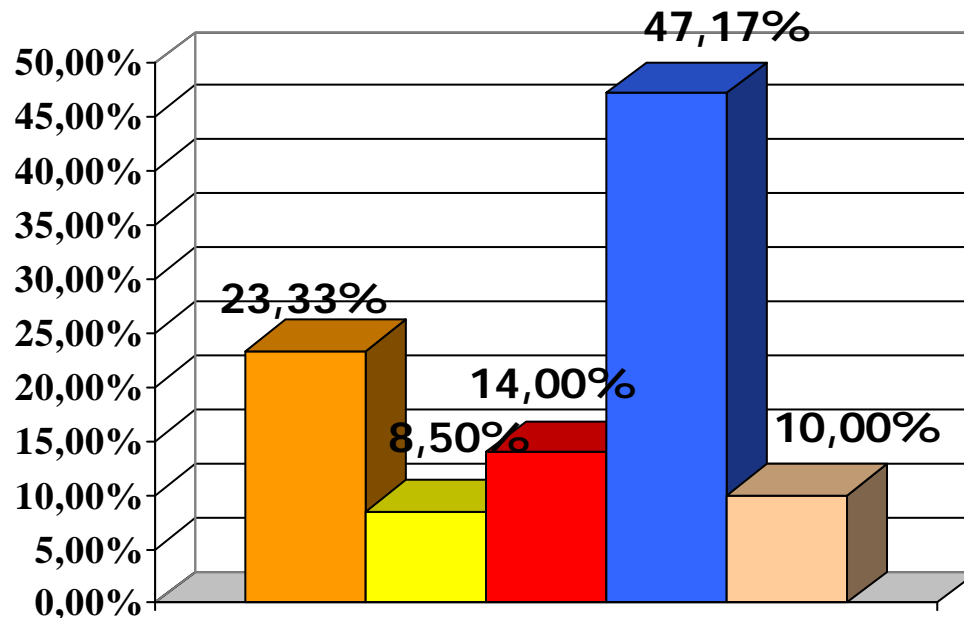
Loti Popescu, MD

General Characteristics of Eligible Respondents by Age



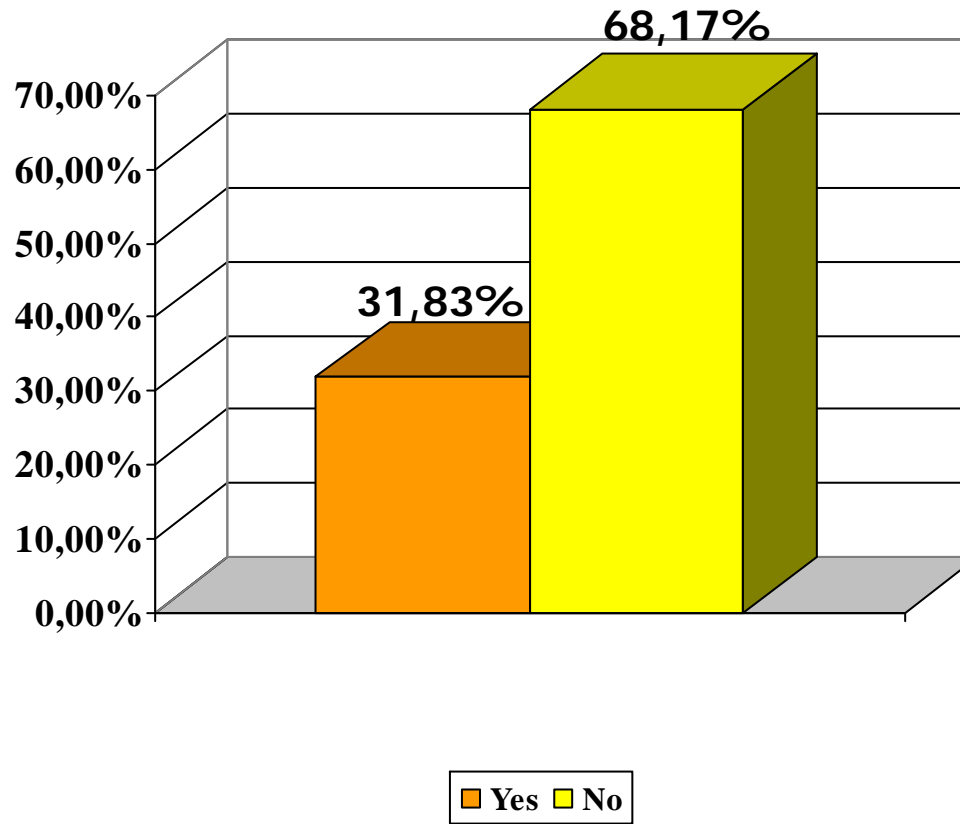
under 25 years 25-40 years 41-55 years 56-65 years over 65 years

General Characteristics of Eligible Respondents by Occupation

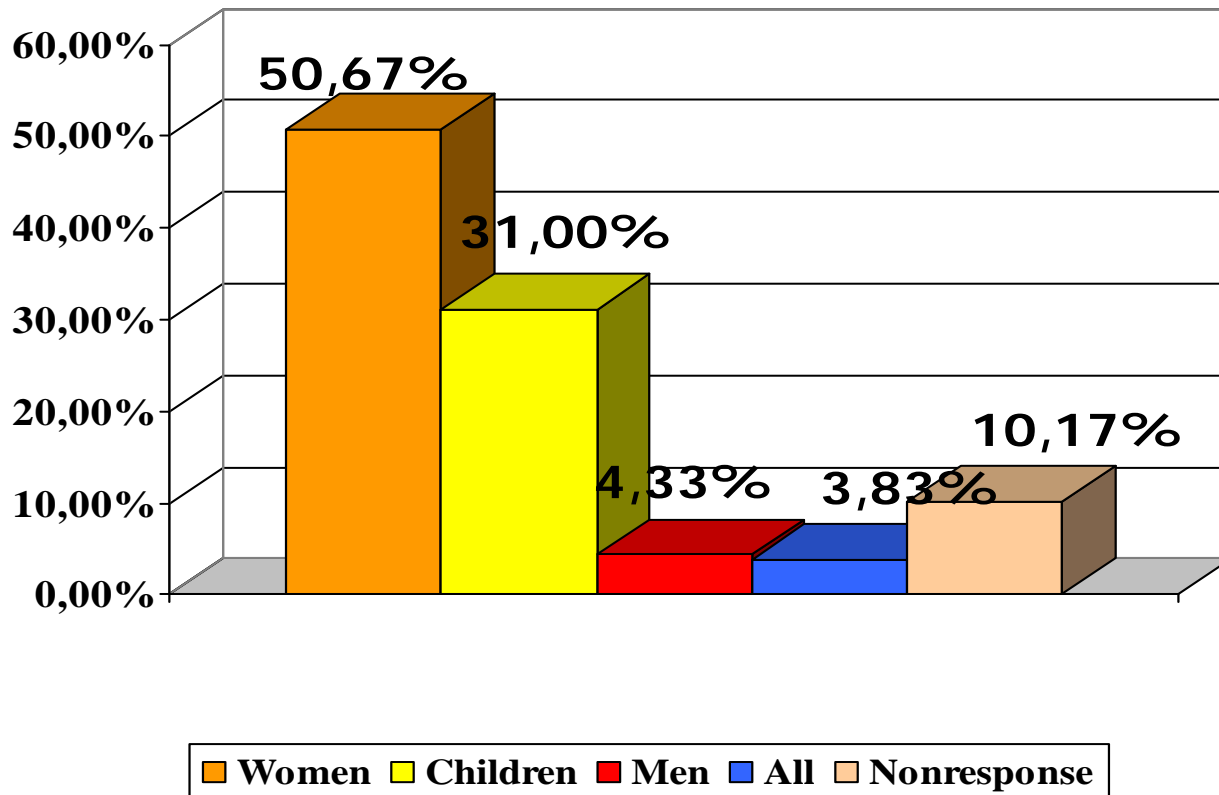


■ Students ■ House keepers ■ Unemployed ■ Employed ■ Pensioners

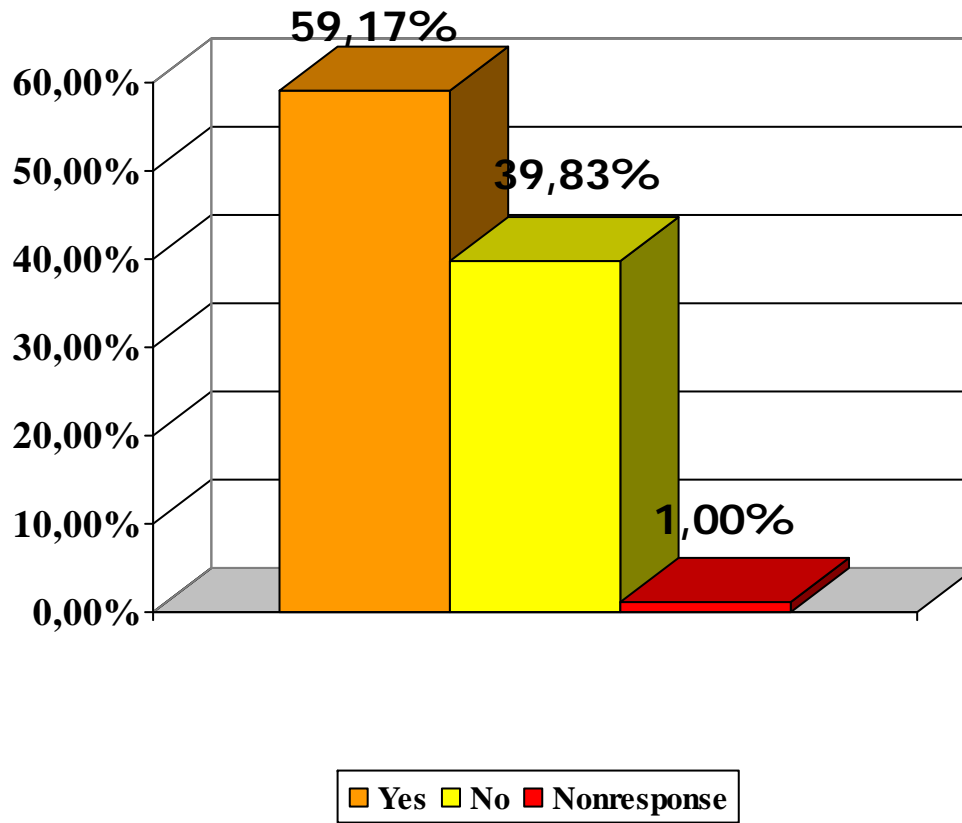
Violence Presence in Respondents' Families



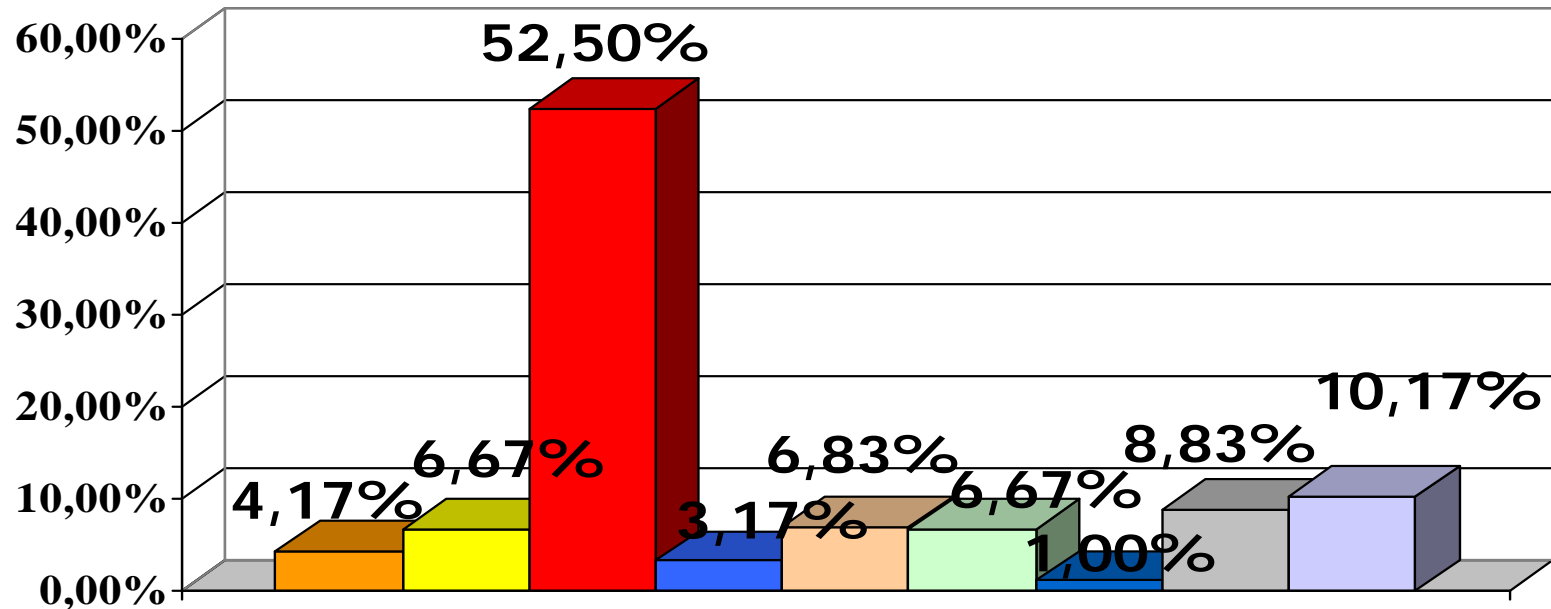
Opinions of Respondents about Persons who are most Vulnerable to Violence



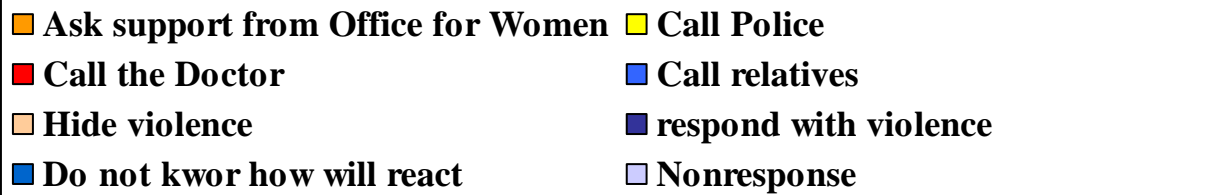
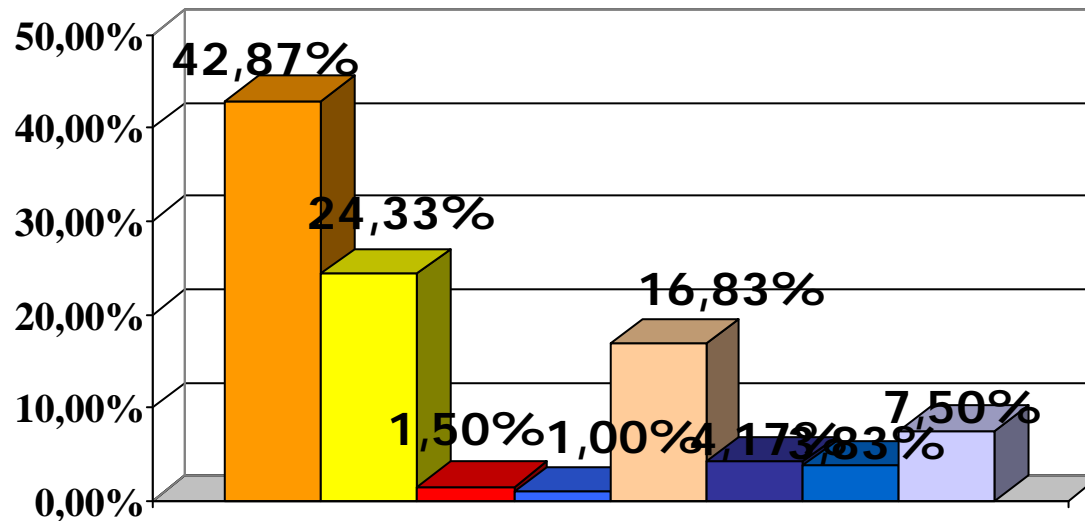
Information about Families with Violence



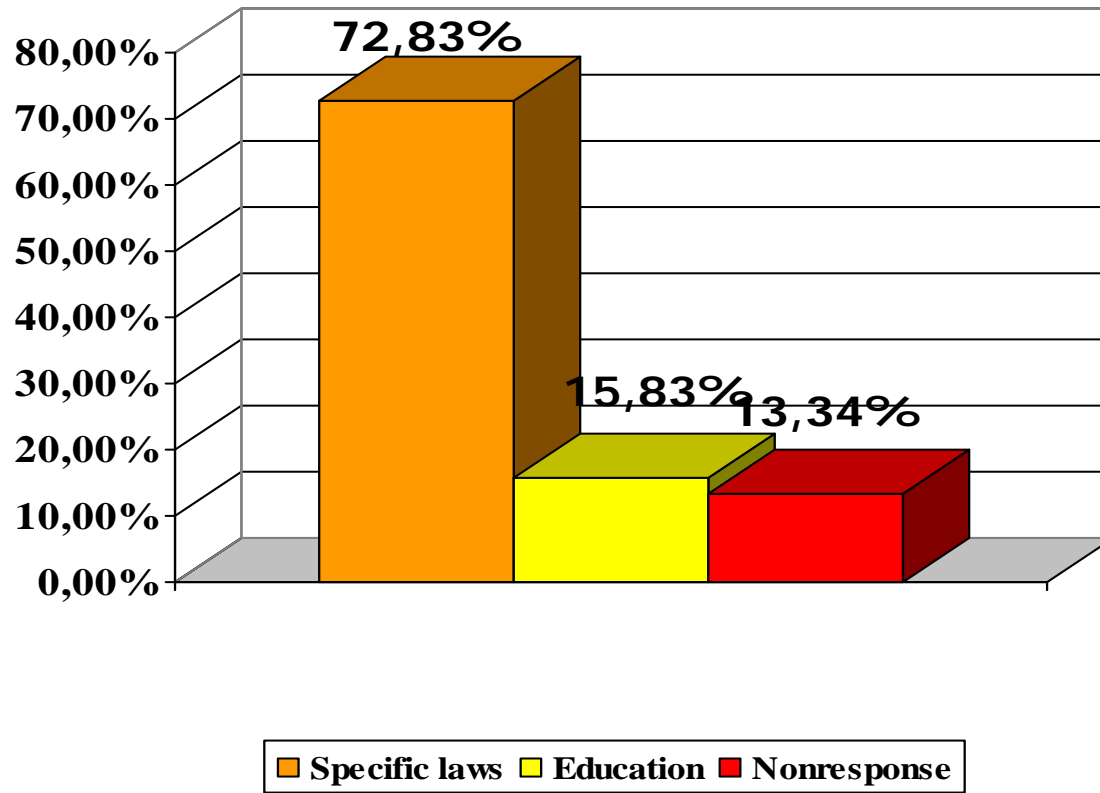
Believes on Social Categories who are most Exposed to Violence



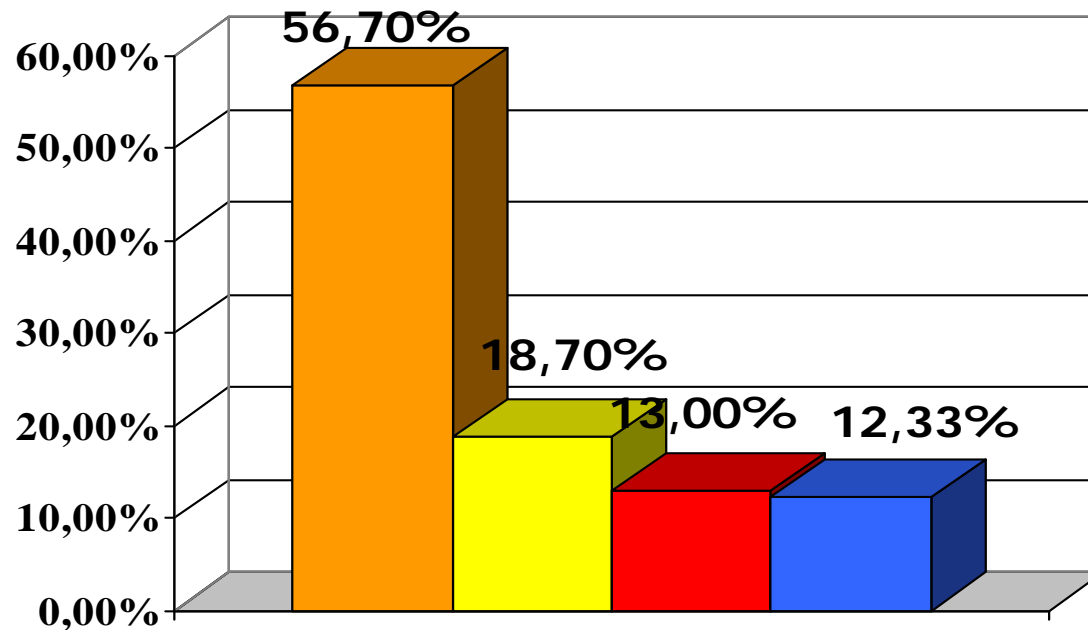
Ways of Response in Case of Violence



Opinions of Respondents about Society Involvement



Knowledge of Respondents about Domestic Violence Forms



Physical Verbal Psyhical Nonresponse